

Sinclair  Hammelton



GUIDE PRICE

£270,000

Hope Park

Bromley, BR1 3RQ

PROPERTY SUMMARY

GUIDE PRICE £270,000 - £280,000

A well presented two bedroom first floor apartment is situated within a quiet cul-de-sac location. The property has great transport links being only 0.4 miles away from Bromley North station and 0.6 from Sundridge Park and Shortlands Stations which are Zone 4 stations. The property is conveniently located for access to Bromley High Street with multitude of restaurants and shopping facilities. Hope Park is built around delightful communal gardens with trees and well-maintained borders. The property briefly comprises a lounge/dining room, fitted kitchen, a spacious bathroom suite and main bedroom looking over the communal garden. Further benefits include off street parking, loft space for storage, gas central heating system and a garage en-bloc. EPC: B

Leasehold - 89 years remaining
Service Charge - £
Ground Rent - £
COUNCIL TAX -
Construction -

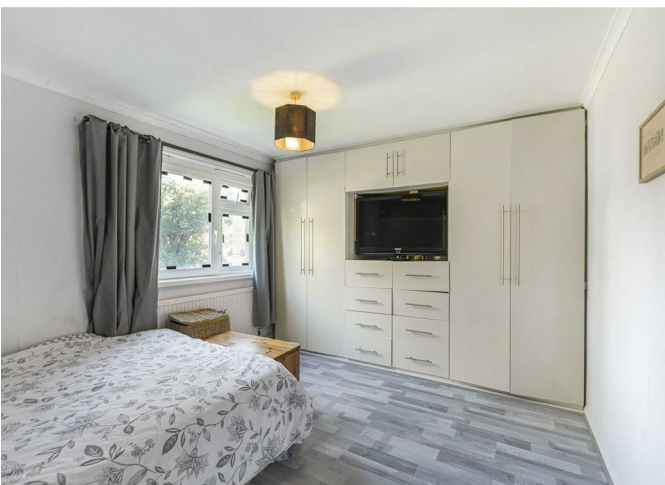
2



1



1

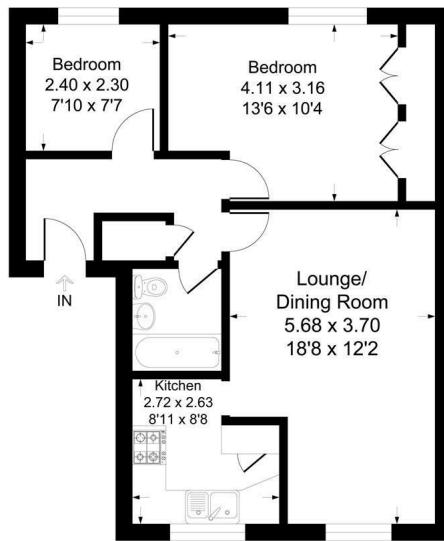






Hope Park, BR2

Approximate Gross Internal Area 57.0 sq m / 614 sq ft



This plan is for layout guidance only. Not drawn to scale unless stated. Windows and door openings are approximate. Whilst every care is taken in the preparation of this plan, please check all dimensions, shapes and compass bearings before making any decisions reliant upon them. Produced By Planfix

2
1
1

Energy Efficiency Rating		
	Current	Potential
Very energy efficient - lower running costs		
(92 plus) A		
(81-91) B	82	82
(69-80) C		
(55-68) D		
(39-54) E		
(21-38) F		
(1-20) G		
Not energy efficient - higher running costs		
England & Wales	EU Directive 2002/91/EC	

EPC RATING: B COUNCIL TAX BAND: C

Agents Note: Whilst every care has been taken to prepare these particulars, they are for guidance purposes only. All measurements are approximate and are for general guidance purposes only and whilst every care has been taken to ensure their accuracy, they should not be relied upon and potential buyers/tenants are advised to recheck the measurements

Sinclair Hammelton

OFFICE ADDRESS
23 High Street
Bromley
Kent
BR1 1LG

OFFICE DETAILS
0208 464 5566
info@sinclairhammelton.co.uk